



Safe, Clean Water  
and Natural Flood Protection

PRIORITY E

# South San Francisco Bay Shoreline Project (Phase I)

**PRIORITY E** Provide flood protection to homes, businesses, schools, streets and highways.

In partnership with



US Army Corps  
of Engineers.



Coastal  
Conservancy



YOUR TAX DOLLARS AT WORK

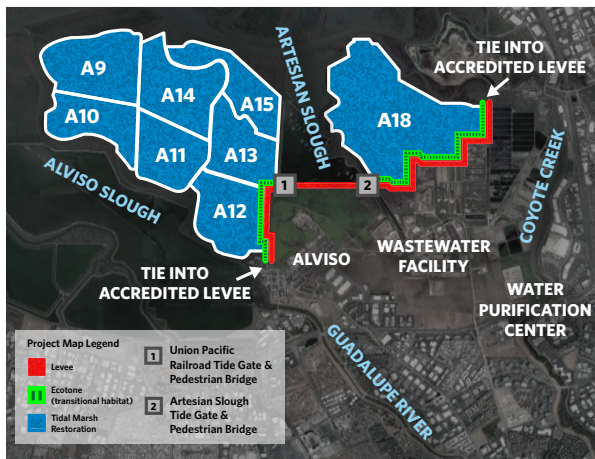


Valley Water

Safe,  
Clean  
Water

and Natural Flood Protection

## Phase I construction begins late November 2021



This summer, Valley Water, the State Coastal Conservancy and the U.S. Army Corps of Engineers (USACE) will begin construction of the South San Francisco Bay Shoreline Project (Phase I) between the Alviso Slough/Guadalupe River and Coyote Creek. Since the area is prone to flooding as a result of storm events and rising sea levels, the completed project will reduce that risk.

The USACE will construct the first portion of the project, known as Reaches 1-3. Reach 1 begins at the Alviso Marina County Park and ends at the Union Pacific Railroad. Reaches 2 and 3 run from the railroad to the Artesian Slough. The project work will occur primarily along Alviso Marina County Park and U.S. Fish and Wildlife Service (USFWS) Alviso Refuge lands. Work hours are 7 a.m. to 5:30 p.m., Monday through Friday, excluding holidays. There will be no weekend work. Construction is scheduled to finish in January 2024.



# South San Francisco Bay Shoreline Project (Phase I)

**PRIORITY E** Provide flood protection to homes, businesses, schools, streets and highways.

Safe, Clean Water  
and Natural Flood Protection

PRIORITY E

In partnership with



US Army Corps  
of Engineers



Coastal  
Conservancy



YOUR TAX DOLLARS AT WORK



Safe, Clean  
Water  
and Natural Flood Protection

## Project Highlights

- Provide flood risk management
- Provide FEMA certifiable coastal levees
- Restore tidal marsh habitat
- Adapt sea level change
- Connect to regional trail system
- Provide pedestrian bridges and observation platforms



Soil was delivered to Pond A12 for use on future levee construction.

## Construction Haul Routes

Trucks entering the construction site from the Alviso Marina County Park will use State Route 237 to Lafayette Street/ Great America Parkway to the Gold Street connector to Gold Street to Elizabeth Street. They will take Elizabeth Street to Hope Street and then use the eastern most county park maintenance access road. Trucks that enter the construction site from the USFWS Refuge Visitor Center will use State Route 237 to Zanker Road/Los Esteros Road to Grand Boulevard. Trucks will generally exit the same way they came in.



Areas of Construction and Haul Routes

## Trail impacts

In addition to increased truck traffic along State Route 237, visitors to the Alviso Marina County Park and the USFWS Refuge should expect long-term closures of the trail and maintenance access roads (highlighted in yellow on the map above) during construction. Valley Water will regularly update the public with trail closure information via signage. Construction notifications will also be included on the project webpage.

When completed, the South San Francisco Bay Shoreline Project (Phase I) will help reduce coastal flood risk for about 5,500 residents and commuters and businesses within the vicinity of Alviso, as well as the San Jose-Santa Clara Regional Wastewater facility and the Silicon Valley Advanced Water Purification Center. This area is at risk of flooding from extreme storms and high tides, and this risk will increase as sea levels rise. The project will also restore and enhance 2,900-acres of tidal marsh and related habitat that was lost due to former salt pond production activities and improve recreational and public access along the bay shoreline.

### Funded by:



US Army Corps  
of Engineers



Valley Water



Coastal  
Conservancy



SAN FRANCISCO BAY  
RESTORATION AUTHORITY

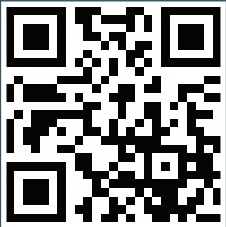


## Get more Information

The South San Francisco Bay Shoreline Project (Phase I) is the latest construction effort by Valley Water and the USACE. Over the years, the partnership has resulted in successful flood protection projects throughout Santa Clara County. Other partners in this effort include the State Coastal Conservancy and USFWS.

For more information about this work, please contact Deputy Operating Officer Rechelle Blank at **408-630-2615** or **[rblank@valleywater.org](mailto:rblank@valleywater.org)**. To learn more about this project visit **<https://delivr.com/2ff7v>**.

Thank you in advance for your patience during the construction of the San Francisco Bay Shoreline Project (Phase I).



<https://delivr.com/2ff7v>

Scan this code to learn more about the project



## Valley Water

Santa Clara Valley Water District  
5750 Almaden Expressway  
San José, CA 95118-3686  
[www.valleywater.org](http://www.valleywater.org)

Envíe un correo electrónico a **[translations@valleywater.org](mailto:translations@valleywater.org)** si tiene preguntas sobre este documento.

Vui lòng liên hệ với **[translations@valleywater.org](mailto:translations@valleywater.org)** nếu bạn có thắc mắc về tài liệu này.

如果您对本文档有任何疑问，请联系 **[translations@valleywater.org](mailto:translations@valleywater.org)**。

PRSR STD  
US POSTAGE  
PAID  
SAN JOSE CA  
PERMIT NO. 1231